



Curtin University

Sexuality and relationships education
for students with special educational needs

Curtin University is a trademark of Curtin University of Technology
CRICOS Provider Code 003013

gdhr
growing & developing healthy relationships



SRE for Students with Special Needs Symposium

Alan Jago
Consulting Teacher Disability High Support Education Service
Contact details:
PH: 9402 6234
alan.jago@education.wa.edu.au

School of Special Educational Needs Disability



Schools of Special Educational Needs
s sen

Students supported by Schools of Special Educational Need in 2015

| Category | Number of Students |
|--|--------------------|
| Autism, Intellectual and Physical Disability, Learning Disabilities, or some combination | 4 745 Students |
| Vision Impairment and/or Hearing Loss | 2 362 Students |
| Medical and Mental Health Conditions | 5 137 Students |
| Online from 2016 | - |

School of Special Educational Needs Disability
Telephone: 9402 6100

School of Special Educational Needs Sensory
Telephone: 9402 6409

School of Special Educational Needs Medical & Mental Health
Telephone: 9340 8529

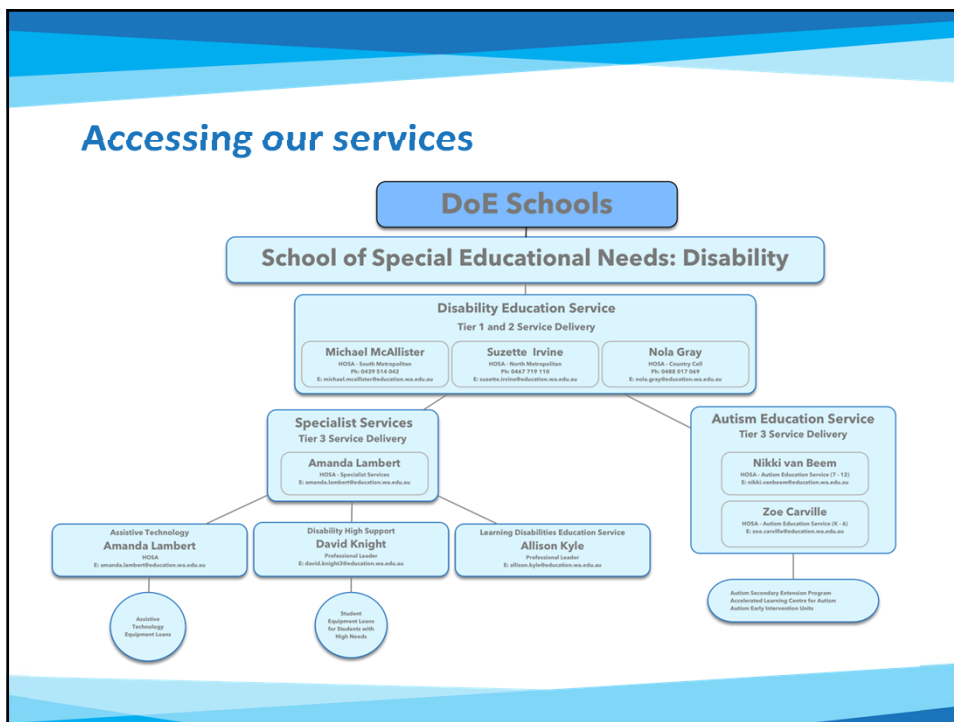
School of Special Educational Needs Behaviour & Engagement
Telephone: 9402 6238

Website: ssen.wa.edu.au

SSEND Vision Statement

‘To make a valued contribution to education through the provision of exemplary support services for students with disability and learning disabilities.’

Accessing our services

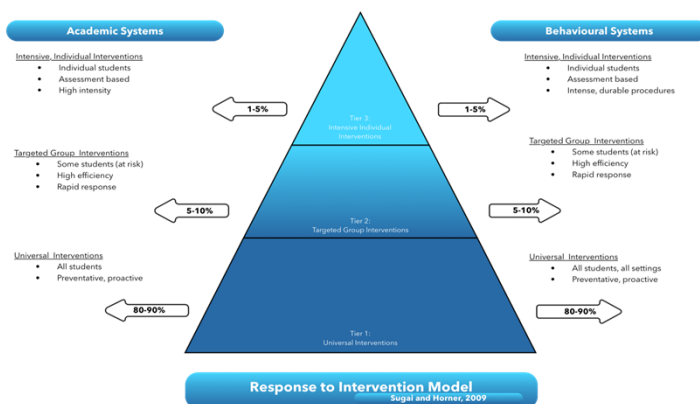


School of Special Educational Needs Disability



Response to Intervention Model

Sugai (2008) advocates a three tiered approach towards student learning and teacher actions to ensure that individual learning needs are catered for. As the model below indicates, the first tier is the approach adopted for the vast majority of students, where syllabus outcomes are aligned to instruction for all students. At the second level, supplemental interventions are developed for students identified as being exposed to some learning risk. The third tier is specifically focused on supplemental interventions tailored for students identified as being high risk learners.





SECCA
Ability
Relationships
Sexuality

City West Lotteries House
2 Delhi Street
West Perth WA 6005
P: (08) 9420 7226
E: Admin@secca.org.au

SECCA

SEXUALITY

EDUICATION

COUNSELLING

CONSULTANCY

AGENCY



Organisational Aims

To ensure people with disabilities have increased capacity to make decisions about relationships, sexuality and sexual health.

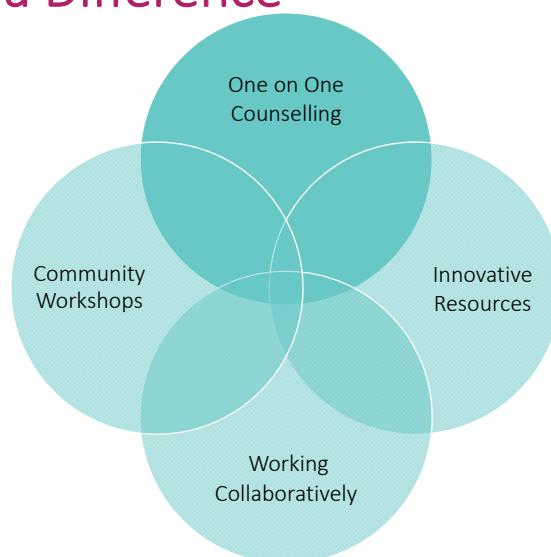
To support families with children with a disability to be better informed about relationships, sexuality and sexual health and therefore better support their child.

To assist agencies who support and have contact with people with disabilities to be better informed and better able to assist their clients.

To ensure **SECCA** is an effective, viable, respected and sustainable organisation.



Making a Difference





Counselling and Education

- Specialist sexuality and relationship counselling and education services for people with a disability
- Therapy based counselling
- One to one
- Triangular model
- Free of charge*
- Number of sessions determined on individual basis



Referrals

- A referral form is required prior to receiving services.
- Detailed information allows our staff to:
 - assess the urgency of the request
 - match the needs of the client to the most suitable counsellor
 - tailor the sessions
- Does not need to be a medical referral. Anyone can complete the form, including the client.
- Forms are available from our website or by contacting the office.



Community Workshops

- Sexuality & Disability
- Boundary Setting & Protective Behaviours
- Supporting Puberty & Adolescence
- Internet Safety
- SECCA Sexuality Concepts Resou
- Sexuality Policy
- Other topics by request



Working Collaboratively

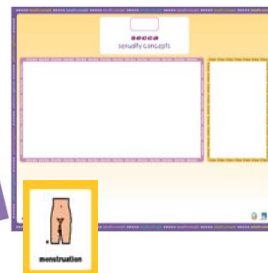


Resources

- SECCA Resource Library
 - Books and pictures
 - Audio-visual materials
 - Anatomical models and dolls
 - Specialist kits
 - Professional references and journals
 - Custom-designed booklets
- You (or your organisation) must be a member to borrow resources
- A full catalogue is available through our website



Sexuality Concepts Resource





SECCA
Ability
Relationships
Sexuality

City West Lotteries House
2 Delhi Street
West Perth WA 6005
P: (08) 9420 7226
E: Admin@secca.org.au



Curtin University is a trademark of Curtin University of Technology
CRICOS Provider Code 003013



People 1st Programme



www.people1stprogramme.com.au
info@pip.org.au



About Us

- A project of The Family Planning Association of WA. SHQ
- Responsive to the needs of people living with an intellectual disability
- Ages range from 5 to 65 years
- Provides one to one sexualiy education and counselling in relationships, protective education and sexuality
- Services in Albany, Busselton, Eaton and Manjimup



- Registered for all NDIS WA services
- Also carry out group programmes and PDs



Topics we Cover

- Promotion of Self esteem
- Dealing with feelings
- Public and Private concepts
- Protective education
- Puberty and hygiene
- Sex and Sexuality
- Inappropriate Masturbation
- Cyber safety, sexting and bullying
- Assertive Communication



- Engaging in Healthy Respectful friendships and Relationships
- Choices and Responsibility
- Men's and Women's Health Issues

